

Eigentumswohnung - Luftenberg Zentrum

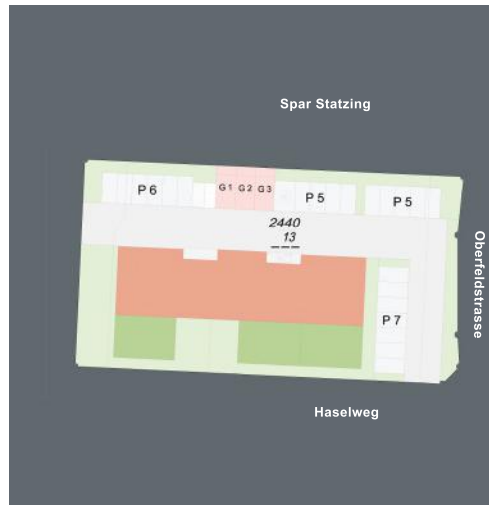
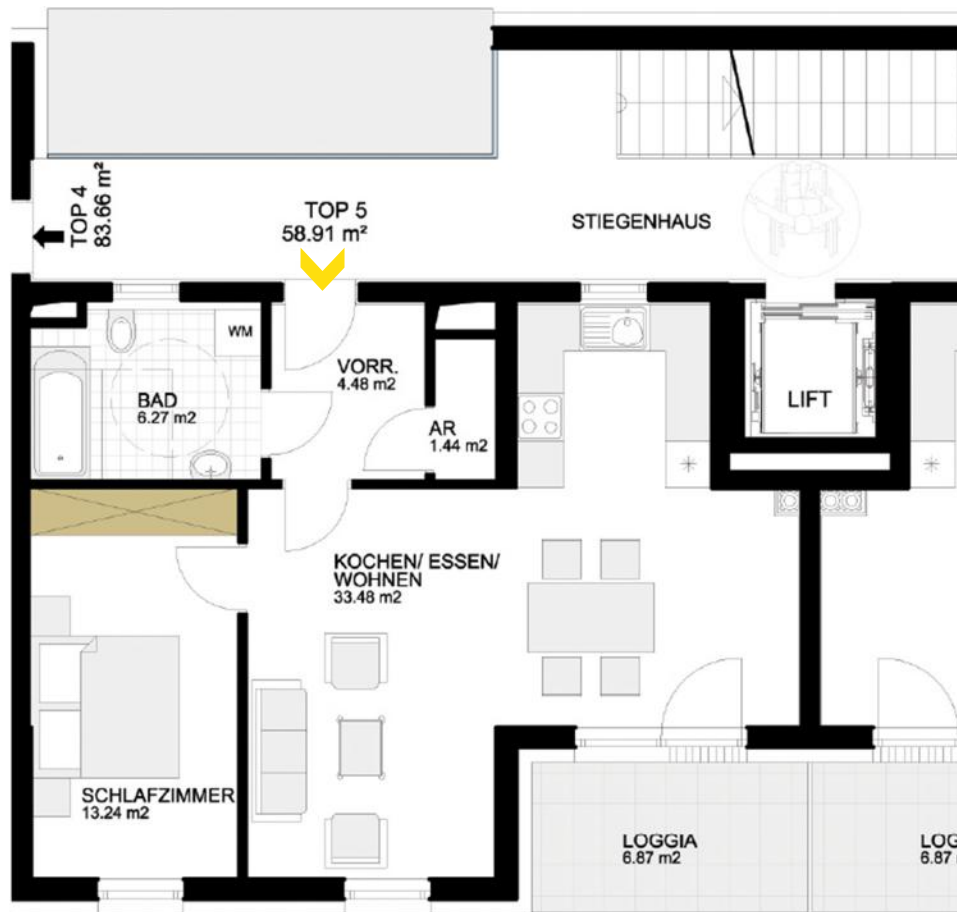
Haselweg 2, 4225 Luftenberg

HENTSCHLÄGER

Immobilien

TOP 5

1. OBERGESCHOSS
2 Zimmer + Loggia



TOP 5- 2Zi, Wohnfläche

AR	1,44
VORRAUM	4,48
KOCHEN/WOHNEN/ESSEN	33,48
BAD/WC	6,27
SCHLAFZIMMER	13,24
58,91m²	

TOP 5- 2Zi, Loggia

LOGGIA	6,87
6,87m²	